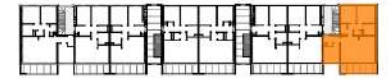
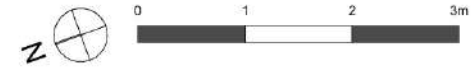


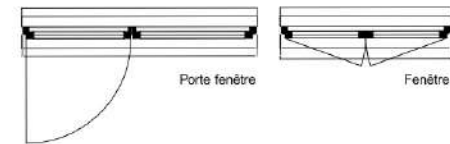
Plan de repérage étage



Echelle de plan



Légende



Surfaces logement

	Surface
CELLIER	2,61
CHAMBRE 01	10,96
CHAMBRE 02	9,59
CHAMBRE 03	9,64
CUISINE	7,38
DGT	4,61
ENTREE	4,63
SALLE D'EAU	4,54
SEJOUR	24,54
WC	1,55
TOTAL	80,05 m²

Surfaces extérieurs

BALCON	9,93
CELLIER	1,75
TOTAL	11,68 m²